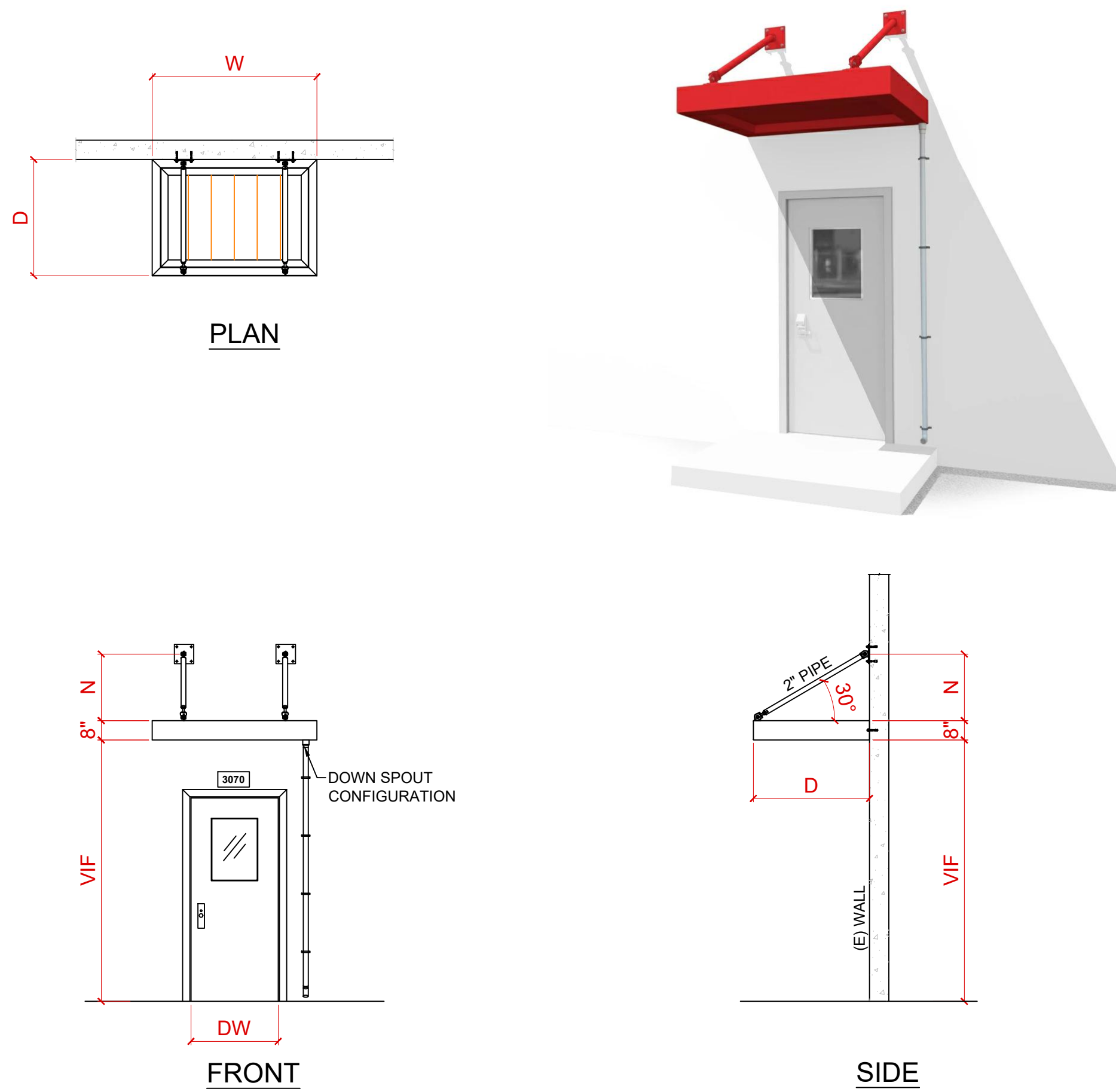
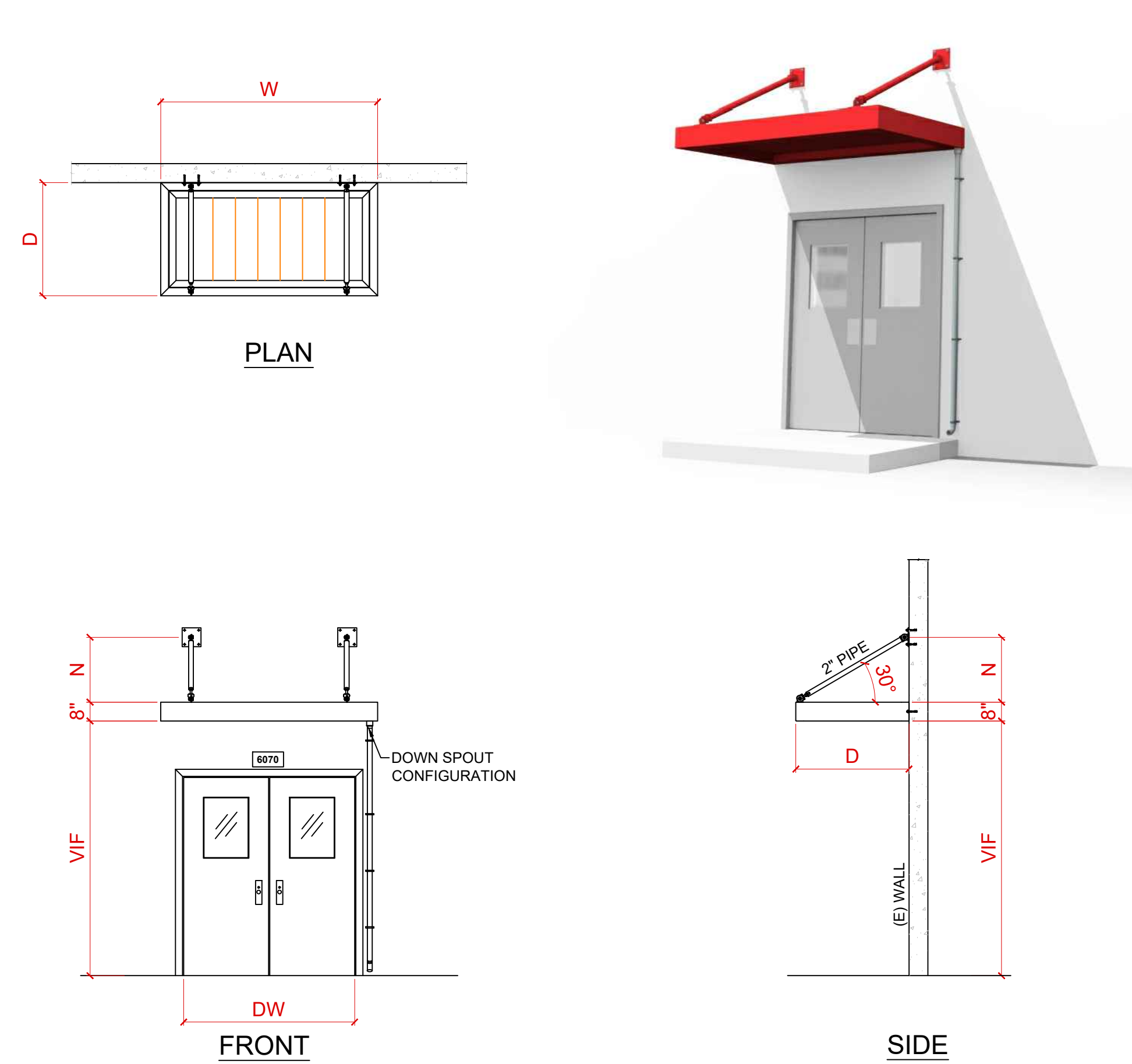


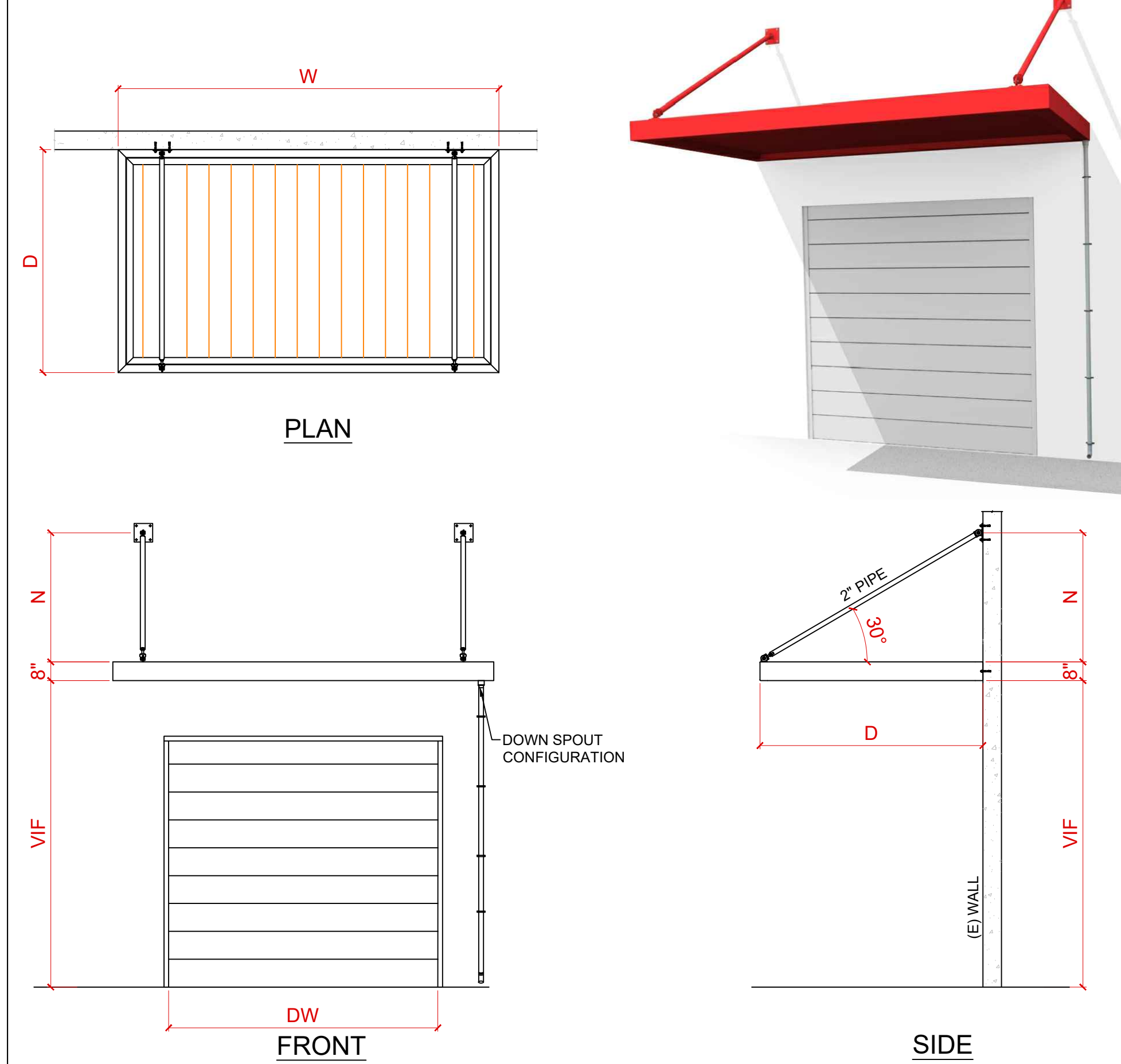
ENTRANCE CANOPIES



SINGLE DOOR - TYPE - EC-36



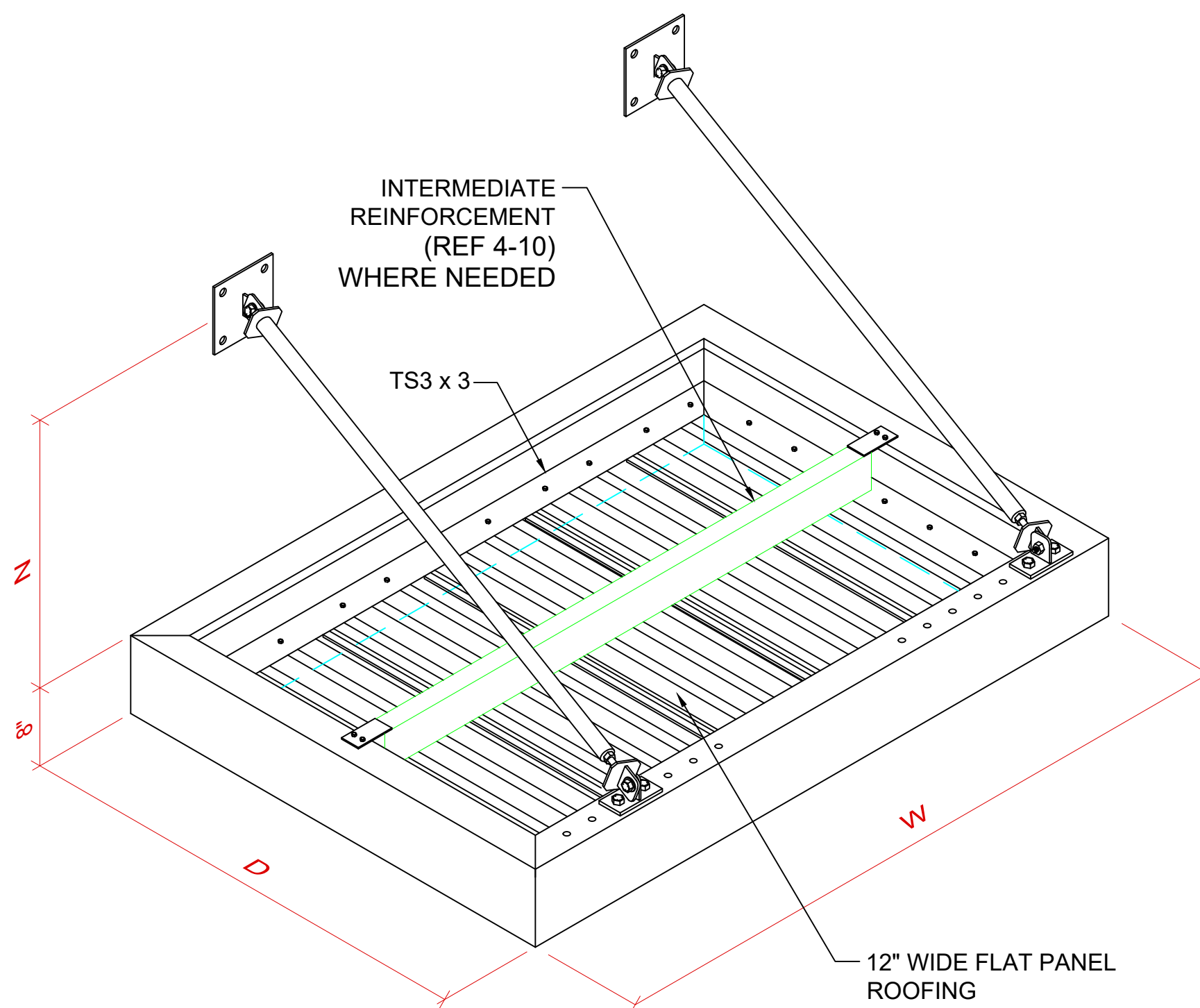
DOUBLE DOOR - TYPE - EC-72



ROLL UP DOOR - TYPE - EC-R120

ATTENTION DEALER/RECTOR/END USER
THIS DRAWING, AND ALL INFORMATION HEREON, REMAINS THE SOLE PROPERTY OF FCP, INC. (FCP). ITS USE IS PROVIDED FOR CONSTRUCTION OF THE SYSTEM DESCRIBED IN THE FCP PROPOSAL, AND IS NOT IN ANY WAY TO BE REPLICATED, FABRICATED OR USED FOR ANY OTHER PURPOSE THAN THAT STATED IN OUR AGREEMENT WITHOUT PRIOR WRITTEN APPROVAL BY FCP.
PERSONS CONTRACTING THE SYSTEM ARE HELD RESPONSIBLE FOR ADHERING TO THE DRAWING, INSTALL, AND MUST COMPLY TO WORKMANSHIP AND SAFETY STANDARDS SET FORTH BY FCP AND INDUSTRY.
IT IS THE SOLE RESPONSIBILITY OF THE DEALER/RECTOR/END USER TO INVENTORY MATERIALS ARRIVING AT THE JOB SITE AGAINST THE NATIONAL LIST. IF SHORTAGE ERRORS ARE NOTED ON THE PACKING LIST ALONG WITH NOTIFICATION TO FCP BEFORE CONSTRUCTION COMMENCES.
UPON NOTIFYING FCP OF THE MISSING COMPONENTS, FCP WILL MAKE EVERY EFFORT TO GET PARTS TO THE JOB SITE IN A TIMELY MANNER. FCP WILL NOT ASSUME ANY COST DUE TO ANY DELAY CAUSED BY MISSING COMPONENTS.
IF A COMPONENT HAS BEEN FABRICATED IN ERROR, FCP MUST BE NOTIFIED IN ORDER TO DETERMINE CORRECTIVE ACTION. FCP WILL NOT BE HELD FINANCIALLY RESPONSIBLE OR LIABLE FOR MISMATCHED FABRICATED PARTS DUE TO INFORMATION SUPPLIED BY THE CUSTOMER OR/AND/OR DEALER, AFTER IT HAS BEEN APPROVED UPON OFFER FOR CORRECTING ANY FABRICATION ERRORS. FCP WILL COMMENCE WITH FABRICATION.

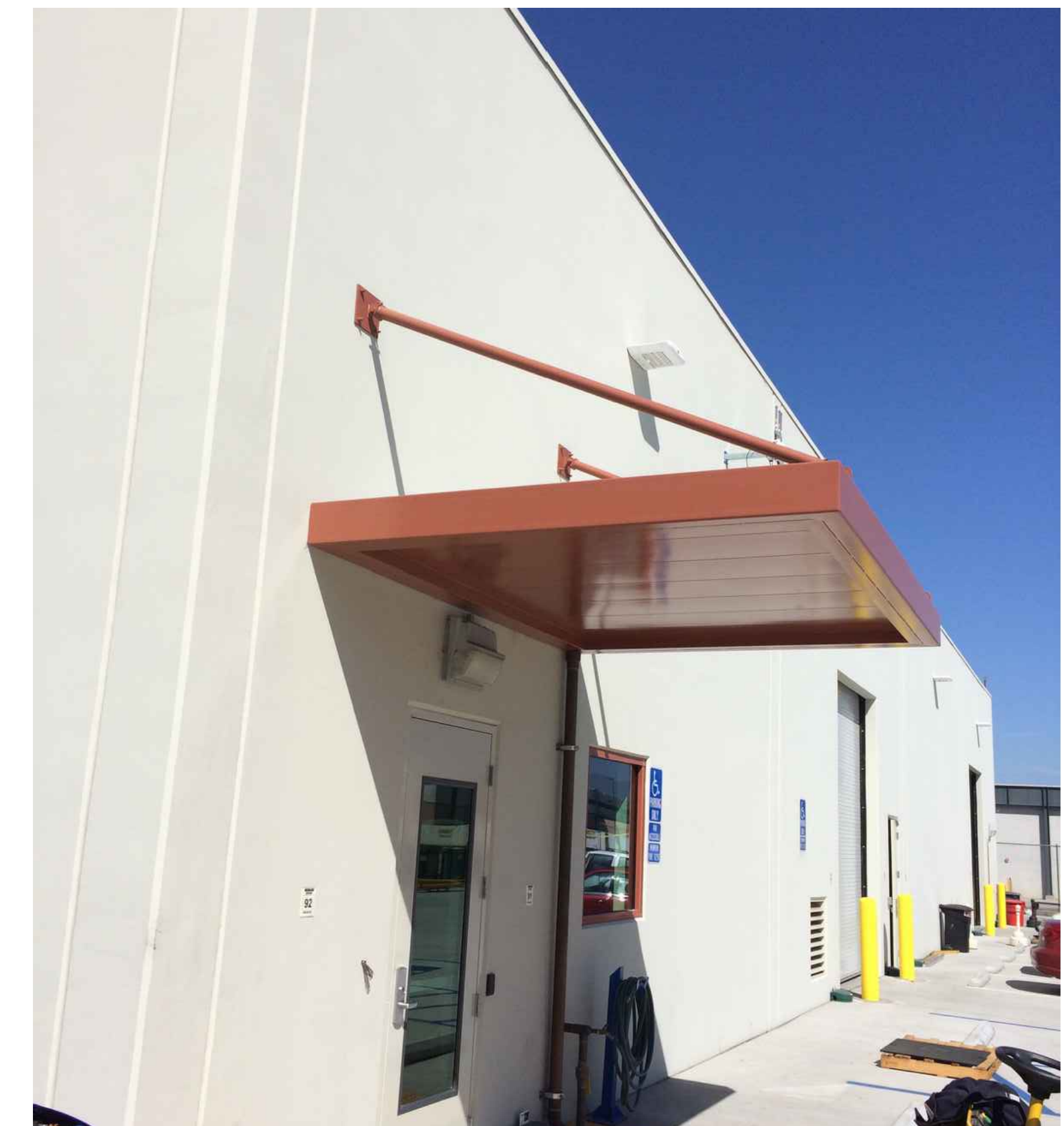
DWG. HISTORY/REVISIONS	BY	DATE
ENTRANCE CANOPY 3070	M.H.	08.04.22



NOTE:
1- BOTTOM FLANGES ACT AS A GUTTER.
2- GALVANIZED FINISH STANDARD.

STANDARD SIZES

CANOPY TYPE	D	W	DW	N
EC-36	4'-0"	5'-8"	3'-0"	2'-3 1/2"
EC-72	4'-0"	7'-8"	6'-0"	2'-3 1/2"
EC-R120-A	4'-0"	9'-8"	8'-0"	2'-3 1/2"
EC-R120-B	4'-0"	11'-8"	10'-0"	2'-3 1/2"
EC-R120-C	4'-0"	13'-8"	12'-0"	2'-3 1/2"
EC-R120-D	6'-0"	9'-8"	8'-0"	3'-5 3/4"
EC-R120-E	6'-0"	11'-8"	10'-0"	3'-5 3/4"
EC-R120-F	6'-0"	13'-8"	12'-0"	3'-5 3/4"
EC-R120-G	8'-0"	9'-8"	8'-0"	4'-7 5/8"
EC-R120-H	8'-0"	11'-8"	10'-0"	4'-7 5/8"
EC-R120-J	8'-0"	13'-8"	12'-0"	4'-7 5/8"



ENTRANCE CANOPY STANDARD OFFERING	SCALE	1/2"=1'-0"
ENTRANCE CANOPY SIZES 10.10.23.dwg		
DRAWN BY: M. HOSSEINI		
PRODUCT: ENTRANCE CANOPIES		
TYPE 36, 72, R120		
DRAWN BY: M. HOSSEINI		
PRODUCT: ENTRANCE CANOPIES		
TYPE 36, 72, R120		
DRAWN BY: M. HOSSEINI		
PRODUCT: ENTRANCE CANOPIES		
TYPE 36, 72, R120		